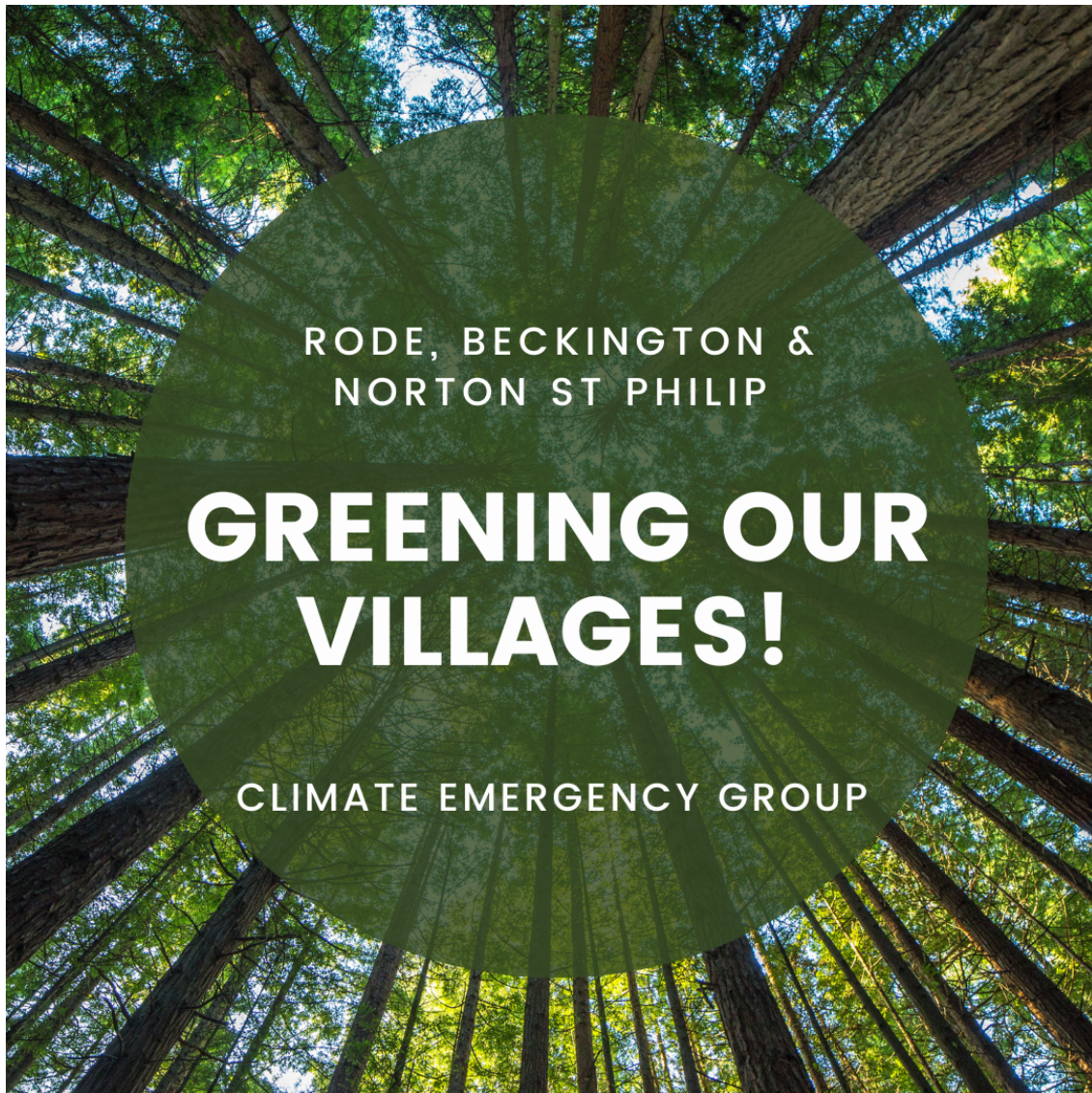


[View this email in your browser](#)



## **Welcome to the December Climate Emergency Group Newsletter**

This is the 12th and final Newsletter of the year.....hopefully somewhere within this edition and the past 11 you will have found something useful!!

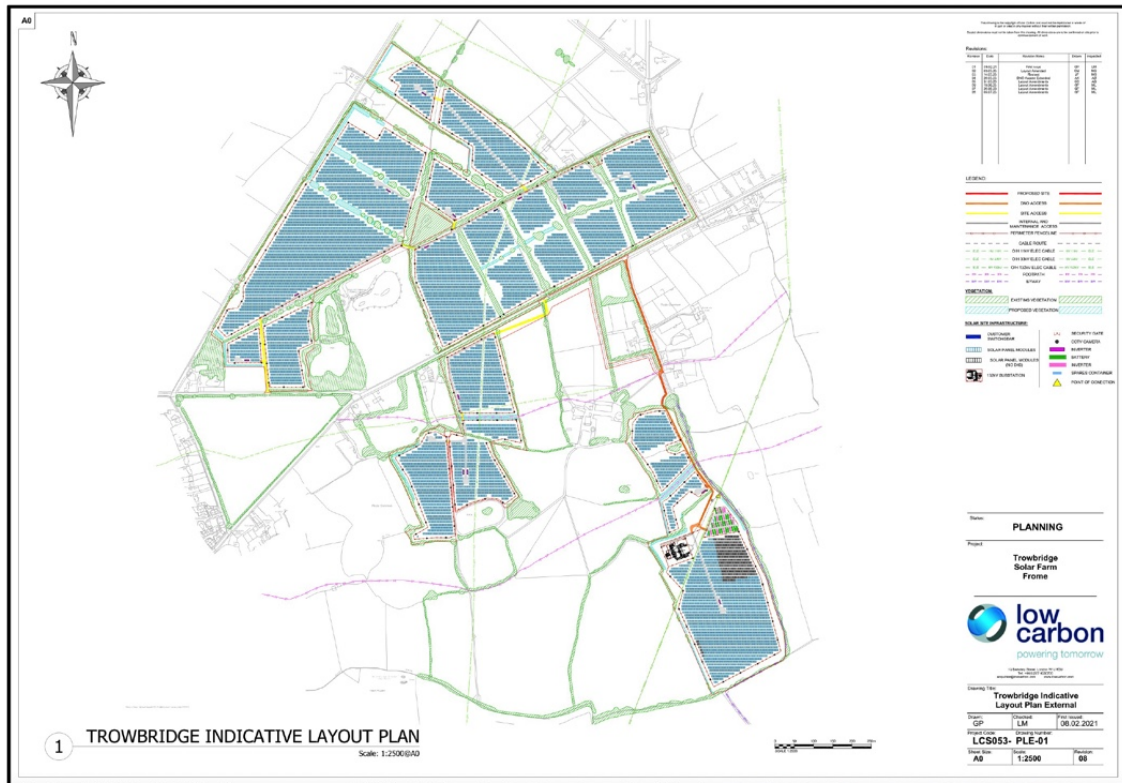
And, with just a few weeks until the end of 2023, we're only 5 subscribers away from hitting the magic 100 mark! If you know someone who might be interested in receiving this newsletter, feel free to forward this issue. New subscribers can sign-up by following the link below. It would be great to reach a century of subscribers by the year-end. Plus, as a special incentive, everyone who is registered as a subscriber on 15th December will be entered into our **Christmas Prize Draw** - details at the foot of the email.

uF20

Enjoy the Christmas holidays, and wishing you a sustainable New Year!

Jim

jim.mcauliffe@btinternet.com



## URGENT - Proposed Solar Farm in Rode

The planning application for the proposed Solar Farm in Rode was published last month, and anyone who registered to receive progress updates on the website should have received a short confirmatory email with details of how to access the planning documentation. If you haven't got the email, but would like to better understand the proposed development, full details are available on the Somerset Council website: <https://publicaccess.mendip.gov.uk/online-applications/applicationDetails.do?activeTab=documents&keyVal=S3WYXFKPIA000>

Or go to the "View and Comment on a Planning Application" section, select "Mendip", then "Find an Application" – the application number is 2023/2183/FUL:



[https://www.somerset.gov.uk/planning\\_building\\_and\\_land/view\\_and\\_comment-on-a-planning-application/?district=Mendip](https://www.somerset.gov.uk/planning_building_and_land/view_and_comment-on-a-planning-application/?district=Mendip)

Rode Parish Council requested an extension to the deadline for responses, and Somerset Council initially confirmed an extension to **15<sup>th</sup> December**. However, it appears that this may now be 21<sup>st</sup> December. Notwithstanding these extensions, it would be very helpful if local residents could also copy any submissions you make to Rode Parish Council\* to enable the PC to better understand local views. [\* [clerk.rodeparishcouncil@gmail.com](mailto:clerk.rodeparishcouncil@gmail.com) ]

**Rode PC will be debating the application at its next meeting on 11<sup>th</sup> December.**

The Climate Emergency Group is holding a short Zoom call on Tuesday 5th December (7.30pm) to discuss the planning application. If you have any particular expertise in Solar Farms, or have knowledge that you think is worth sharing on the call, please let me know: [jim.mcauliffe@btinternet.com](mailto:jim.mcauliffe@btinternet.com)



## Bath Green Open Homes

Some of you may have attended the Green Open Homes event in Bath on 5th & 6th November...if so, you were among around 700 visitors to the various open homes...read more about this very successful initiative here: <https://transitionbath.org/green-open-homes-event-attracts-over-700-visits-to-local-eco-homes/>

These sort of events seem to be increasingly frequent and popular - and we'll do our best to signpost future similar local events in this newsletter.



## **£2 Single Bus Fare - getting the message out!**

With the extension of the £2 single bus fare to the end of next year, Somerset Bus Partnership re-printed their "decals" (durable stickers) to highlight the good news, and FAVBUG (Frome And Villages Bus User Group) volunteers have spent their spare time ensuring these are prominently displayed on local bus shelters. They've also spent time cleaning up many of the bus shelters in Frome, which are often in a poor state. Well done FAVBUG!

---

## Climate Emergency

Rode Parish Council formally declared a Climate Emergency in early 2021. A Climate Emergency Group was established later in the year, and in 2022 expanded to cover the villages of Beckington and Norton St Philip. More details about the group and its objectives, together with Newsletters, advice and guidance, can be found by following the links further down this page.

If you're worried about the Climate Emergency, but are not sure what to do, Friends of the Earth have some great ideas here: <https://friendsoftheearth.uk/climate-change/protecting-the-environment>

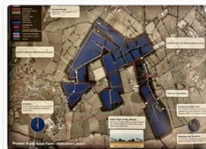
### Latest News



#### Solar Farm – Planning Application

[Read more](#) →

27 November 2023



#### Solar Farm – update

[Read more](#) →

15 October 2023

### Related Pages

- ↓ [Advice and Guidance](#)
- ↓ [Climate Emergency Newsletter](#)
- ↓ [Climate Emergency Group](#)
- ↓ [How do we tackle the Climate Emergency?](#)

## New website for Rode Village

This newsletter is aimed at residents of Beckington, Norton St Philip and surrounding areas - as well as Rode - but the local Climate Emergency Group sprang initially from the decision by Rode PC to formally declare a Climate Emergency. Unfortunately for Rode residents our village website wasn't able to take a role in supporting the initiative....the village has had a website for a number of years, but it was rather limited. It compared relatively poorly to other local Parish Council websites (eg: Beckington, Southwick...), and there were some other challenges with the old site (including accessibility).

Earlier this year, therefore, Rode PC decided to put together a new website – primarily aimed at widening engagement with what the Parish Council is doing, but also acting as a portal/information hub for a whole range of activities in and around the village, including the Climate Emergency Group.

The new site is now live at [www.rodevillage.com](http://www.rodevillage.com) Importantly, it includes a Climate Emergency section which is aimed at providing advice and information, and also acts as a repository for past Climate Emergency newsletters. Search it out here: <https://www.rodevillage.com/climate-emergency/> And feel free to provide feedback and suggestions: [info@rodevillage.com](mailto:info@rodevillage.com)



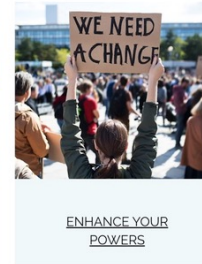
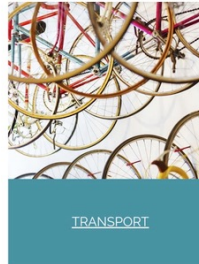
## ECO RESOURCES

Browse our links to external online resources

Our resources have been compiled to support people participating in Eco Together's self-run eco action programme, but ideally can provide inspiration to anyone wanting to take action to address climate change and biodiversity loss.

The resources are intended to be helpful, but not exhaustive, in supporting actions and specifically in engaging with local programmes and organisations. Many resources are relevant across the UK, but some are specifically relevant to the local communities of Bath, where the lists originated.

Download the [full list of resources](#) here, or follow the section links below to browse from our website.



## Eco Together

Eco Together is a Bath-based organisation that inspires communities and individuals to take action to address the climate emergency. They have a great website, and much of their material is relevant wherever you are in the UK (or the world!). But of particular interest is their eco-resources listing, which is locally focussed. It's well worth taking a look:

<https://www.ecotogether.info/eco-resources>



## Demand Flexibility Service - what is it?!



power plants are obviously bad for the environment. However, an initiative called "The Demand Flexibility Service" reduces the need to turn on these power plants by incentivising consumers to reduce their usage at specific peak times.

The service has 12 events that run between November 2023 and March 2024. Each event lasts for around an hour, and they usually happen in the evenings when demand for electricity is at its peak. If you sign up to take part, you'll be asked to reduce your electricity use during each scheduled event.

For more information, and to find out if you are eligible, check out <https://www.nationalgrideso.com/industry-information/balancing-services/demand-flexibility-service-dfs#How-to-participate>



**Have a great Christmas – but make it sustainable!**

---

[christmas](#) ). And if you're buying a real tree, ideally buy local. Osborne's grow their trees locally and supply them in Rode – an ideal combination! Details here: <https://o-christmas.co.uk/>

And once the decorations are down, if possible recycle your tree. A two metre tall real Christmas tree, with no roots, has a carbon footprint of 16kg CO<sub>2</sub>e if it ends up in landfill. This is because the tree decomposes and produces methane gas, which is 25 times more potent as a greenhouse gas than carbon dioxide. If you have it chipped to spread in public park and gardens it will significantly reduce the carbon footprint by up to 80% (around 3.5kg CO<sub>2</sub>e). And if you sign up for a tree collection through Just Helping, you can donate the collection charge to with Dorothy House: <https://just-helping.org.uk/>

---



100 amazing vegan recipes for everyone!

**VEGANUARY** 



# The Official Veganuary Cookbook

Finally, as mentioned at the top of this newsletter, every subscriber will be entered into a prize draw on 15th December, with the chance to win a copy of the above book - The Official Veganuary Cookbook. The book is published on 7th December, and would make a great gift for any budding vegan....or, in fact, anyone who is looking to reduce the amount of meat in their diet. The lucky winner will be contacted immediately after the draw. Good Luck all!



This email was sent to <<Email Address>>

[why did I get this?](#) [unsubscribe from this list](#) [update subscription preferences](#)

Rode Climate Emergency Group · 17 High Street · Rode · Frome, Somerset BA11 6NZ · United Kingdom

